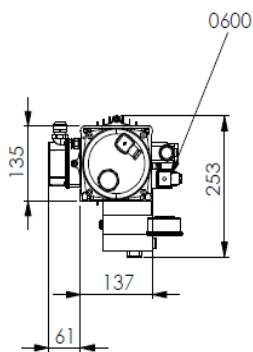
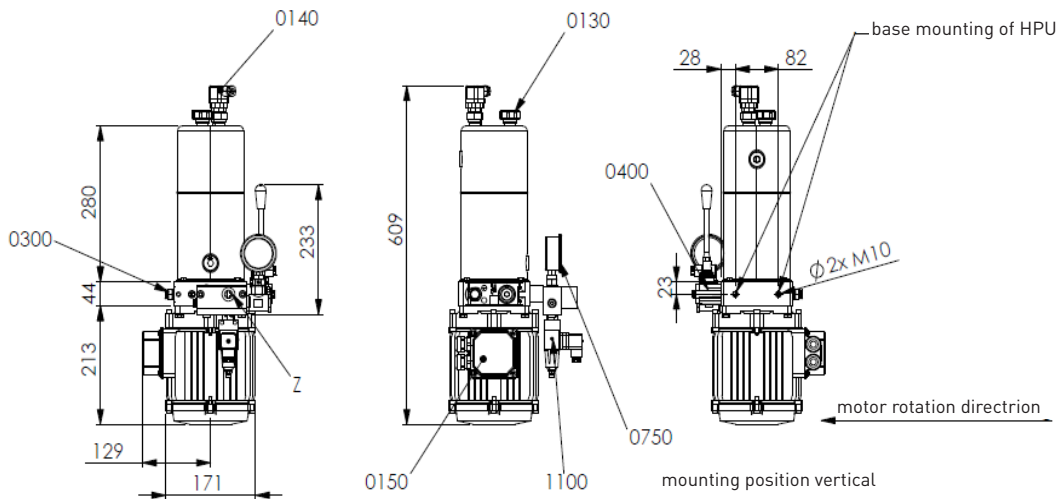
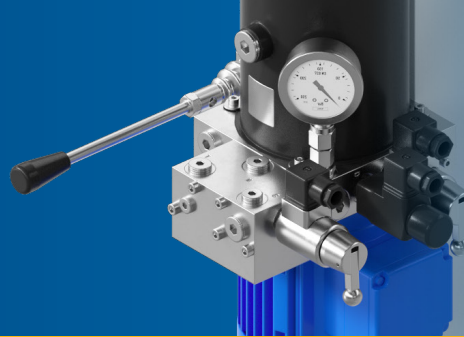


HYDRAULIC POWER UNIT V2

M 1501 484 E



Legend

0130	filler and breather screw
0140	electr. oil level gauge
0150	electro motor
0200	pump
0220	suction filter
0300	pressure relieve valve
0400	hand pump
0600	2/2 way directional seat valve
0750	pressure gauge
1100	pressure switch
Z	pressure port to brake G3/8"

TECHNICAL DATA

- weight without oil-filling
- tank volume
- ambient temperature ranges
- humidity
- recommended operating fluid
- protection class
- max. no. of operating cycles per hour
- motor
- supply voltage range
- valve voltages
- valve capacity per valve
- mounting position of HPU

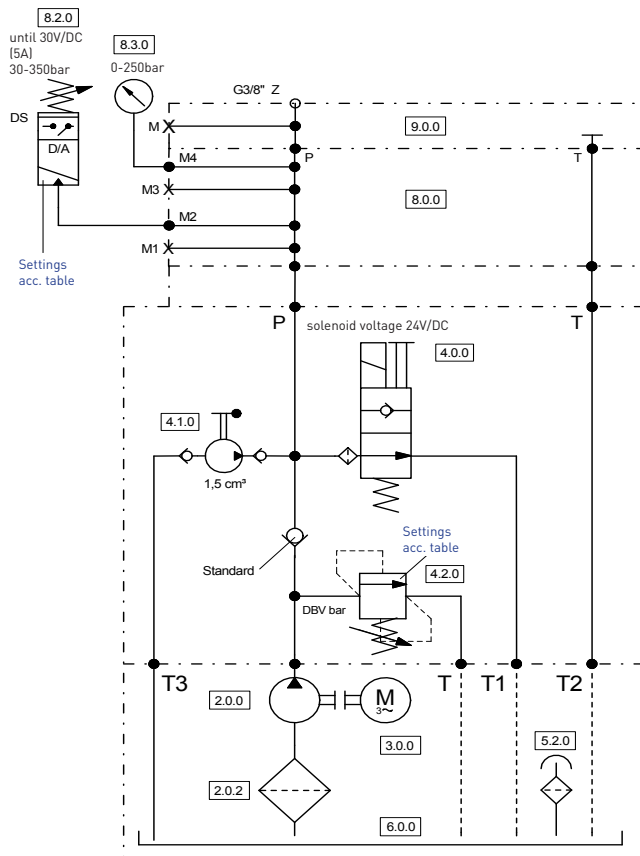
approx. 15 kg
 3 ltr. || usable 2,3 ltr.
 -15°C ... +40°C in standard version
 optional expandable
 ≤ 90%
 HLP Hydraulic oil acc DIN51524-T2
 -for standard version: HLP Synth 32
 -others version: upon request
 IP54 || IP65 upon request
 50
 AC motor; BG 90; 4 pole, 3-ph, 1450 U/min
 ISO-cl. F, S3 = 30 %
 50 Hz / 380-420 V
 60 Hz / 440-480 V
 P = 24 V DC (Standard)
 V = 115 V AC ; 50/60 Hz (optional)
 W = 230 V AC ; 50/60 Hz (optional)
 (others upon request)
 40 l/min at Δp 10 bar
 vertical || horizontal upon request



HYDRAULIC POWER UNIT V2

M 1501 484 E

TYPE	PRESSURE SWITCH		PRESSURE RELIEVE valve setting (DBV)	RELEASE PRESSURE	PUMP CAPACITY	MOTOR POWER kW	
	min	max				S1	S3 (30%)
	bar		bar	bar	l/min		
V2.1-E	55	70	85	55	5,8	1,5	2,2
V2.1-A	80	95	110	80	5,8	1,5	2,2
V2.1-B	120	135	150	120	5,8	1,5	2,2
V2.1-D	145	160	175	145	5,8	1,5	2,2
V2.1-C	175	190	205	175	5,8	1,5	2,2



Legend

- 5.2.0 filler and breather screw
- 3.0.0 electro motor
- 2.0.0 pump
- 2.0.2 suction filter
- 4.2.0 pressure relieve valve
- 4.1.0 hand pump
- 4.0.0 2/2 way directional seat valve
- 8.3.0 pressure gauge
- 8.2.0 pressure switch
- Z pressure port to brake G3/8"

TYPE	SUITABLE FOR				
V2.1-E	SHI 102	SHI 101	SHI 75-2	SHI 75-1	
V2.1-A	SHI 104	SHI 103	SHI 75-4	SHI 75-3	
V2.1-B	SHI 251	SHI 201	SHI 161	SHI 105	SHI 75-5
V2.1-D	SHI 281	SHI 252	SHI 231	SHI 106	SHI 75-6
V2.1-C	SHI 282	SHI 232	SHI 202	SHI 162	SHI 107
	CB8-H				