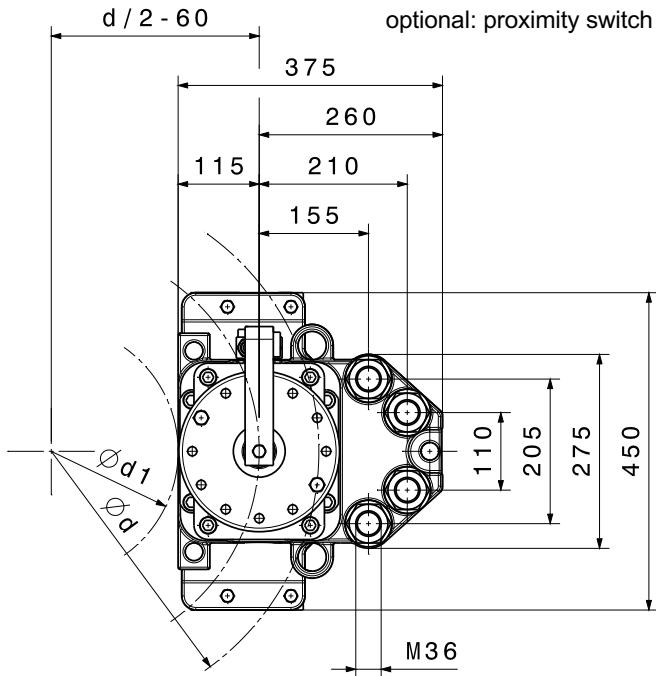


CALIPER BRAKE

SHI 201 & 202

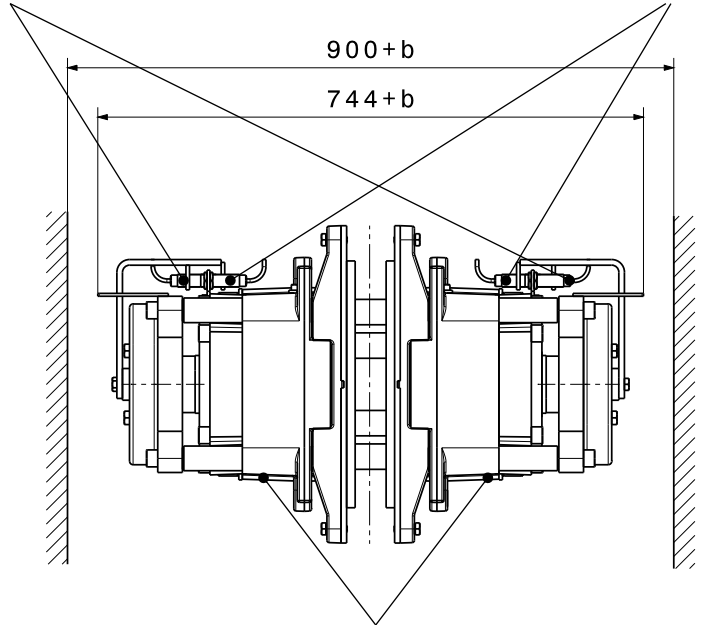


M 1501 201 01 E-EN-2017-01

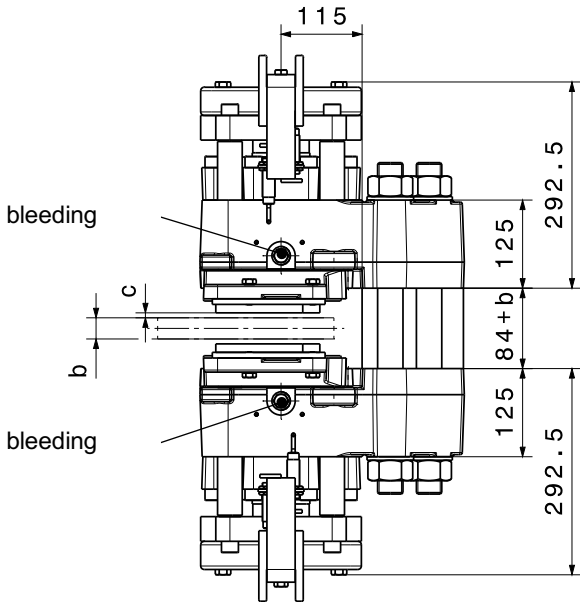


optional: proximity switch "brake open / closed"

optional: proximity switch "lining wear"



hydraulic connection G 1/2"



manual release device is optionally available

SHI-Type		201	202	
Clamping Force F_A				
F_A	with airgap $c = 1 \text{ mm}$	kN	170	240
F_A	with airgap $c = 2 \text{ mm}$	kN	160	220
F_A	with airgap $c = 3 \text{ mm}$	kN	150	200
Torque Calculation				
M_{Br}	braking torque	Nm	$2 \times F_A \times \mu \times (d/2-60)$	
Hydraulic				
PL	release pressure	bar	115	160
P_{max}	max. pressure	bar	150	205
V_{max}	volume at $c = 2,0 \text{ mm}$	ltr	0,071	
Brake Discs				
b	disc thickness	mm	≥ 20	
d	disc- \emptyset	mm	≥ 1100	
d_1	max. hub or drum- \emptyset	mm	d-360 mm	
Dimensions				
L x B x H = 375 x (744+b) x 450 mm				
weight: 300 kgs				

Mounting Studs		
n	quantity	4
	size, grade	M36, 12.9
M_A	fastening torque	Nm 4280 at $\mu=0,14$
Linings		
	material	sinter
	friction coefficient*	0,4

*average friction coefficient with standard material combination and a circumferential speed up to 15 m/s