

CALIPER BRAKE

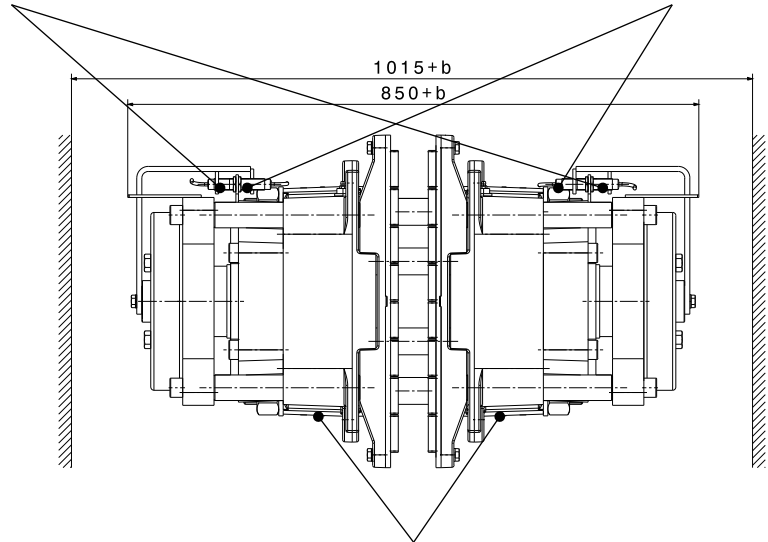
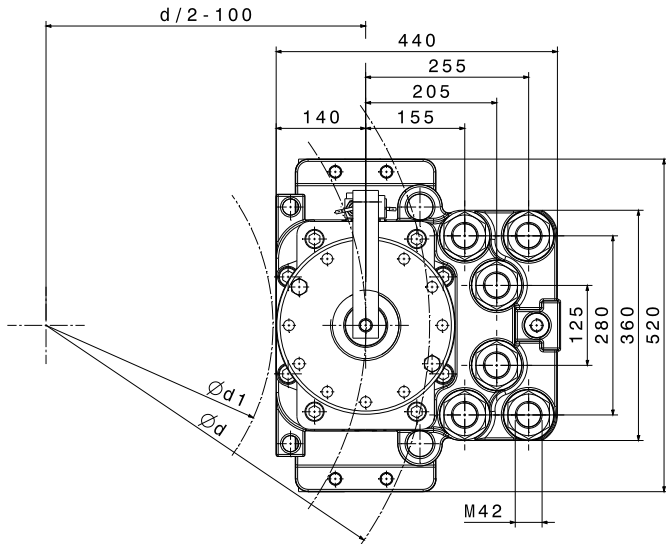
SHI 251 & 252



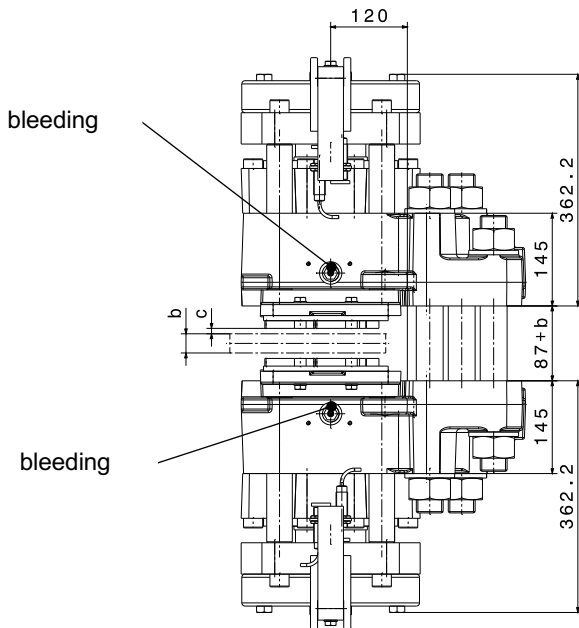
M 1501 428 E-EN-2017-01

optional: proximity switch "brake open / closed"

optional: proximity switch "lining wear"



hydraulic connection G 1/2"



manual release device is optionally available

Mounting Studs		
n	quantity	6
	size, grade	M42, 12.9
M_A	fastening torque Nm	6000 at $\mu=0,14$
Linings		
	material	sinter
	friction coefficient*	0,4

SHI-Type		251	252	
Clamping Force F_A				
F_A	with airgap c = 1 mm	kN	335	440
F_A	with airgap c = 2 mm	kN	302	400
F_A	with airgap c = 3 mm	kN	270	360
Torque Calculation				
M_{Br}	braking torque	Nm	$2 \times F_A \times \mu \times (d/2-100)$	
Hydraulic				
PL	release pressure	bar	105	140
P_{max}	max. pressure	bar	150	175
V_{max}	volume at c=2,0 mm	ltr	0,142	
Brake Discs				
b	disc thickness	mm	≥ 20	
d	disc- \emptyset	mm	≥ 1200	
d_1	max. hub or drum- \emptyset	mm	d-490 mm	
Dimensions				
L x B x H = 440 x (850+b) x 520 mm				
weight: 610 kgs				

*average friction coefficient with standard material combination and a circumferential speed up to 15 m/s