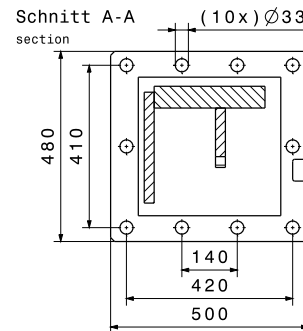
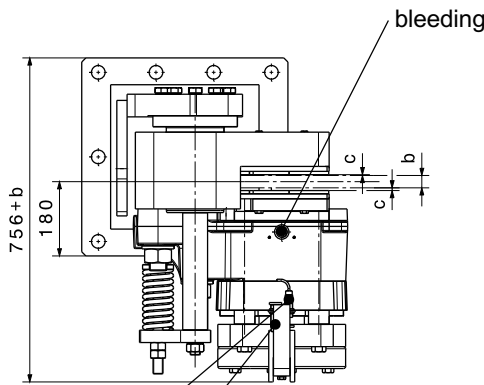
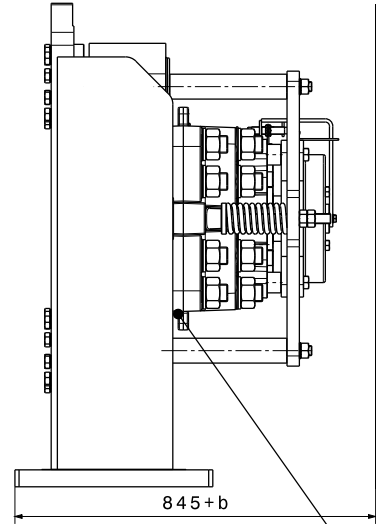
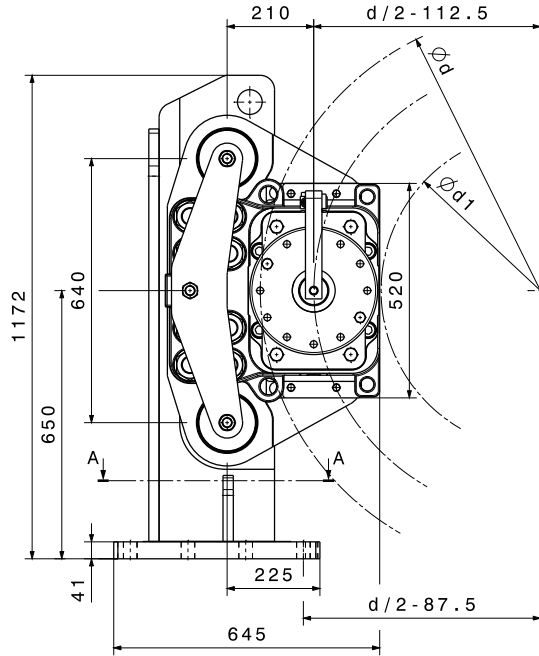


CALIPER BRAKE

SHI 280 FC with console



M 1501 432 E-EN-2016-12



hydraulic connection G 1/2"

manual release device is optionally available

optional: proximity switch "lining wear"

optional: proximity switch "brake open / close"

Mounting Studs			
n	quantity	10	
	size, grade	M30, 8.8	
M_A	fastening torque	Nm	1450 at $\mu=0,14$
Linings			
	material	sinter	
	friction coefficient*	0,4	

SHI-Type		281 FC	282 FC	
Clamping Force F_A				
F_A	with airgap $c = 1,0$ mm	kN	425	510
F_A	with airgap $c = 1,5$ mm	kN	395	465
Torque Calculation				
M_{Br}	braking torque	Nm	$2 \times F_A \times \mu \times (d/2-112.5)$	
Hydraulic				
PL	release pressure	bar	135	165
P_{max}	max. pressure	bar	175	205
V_{max}	volume at $c = 1,5$ mm	ltr	0,09	
Brake Discs				
b	disc thickness	mm	$30 \leq b \leq 40$	
d	disc- ϕ	mm	$1600 \leq d \leq 5000$	
d_1	max. hub or drum- ϕ	mm	d - 545	
Dimensions				
L x W x H = 645 x (756+b) x 1172 mm				
max. weight: 1120 kgs				

*average friction coefficient with standard material combination and a circumferential speed up to 15 m/s

When ordering please advise: right hand version, as shown; left hand version, mirror inverted!