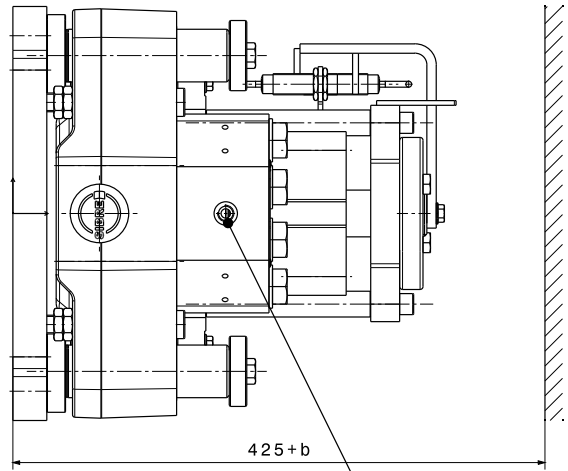
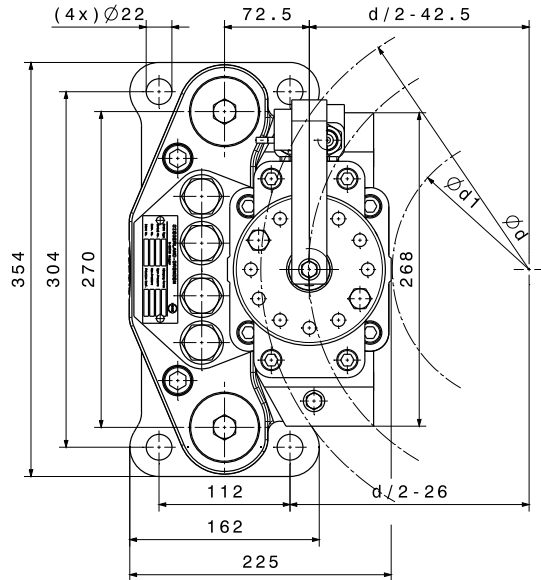


CALIPER BRAKE

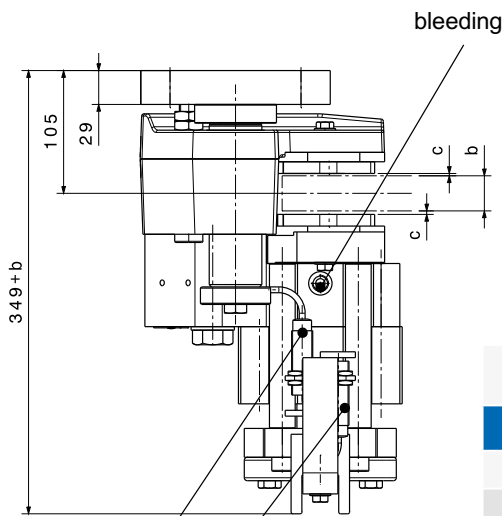
SHI 75 FC with flange



M 1501 385 E-EN-2016-12



hydraulic connection M14x1.5



bleeding

optional: proximity switch
"lining wear"

optional: proximity switch
"brake open/ close"

manual release device is optionally available

| SHI-Type | | 1 | 2 | 3 | 4 | 5 | 6 | |
|--|---------------------------|-----|--------------------------------|------|------|------|------|------|
| Clamping Force F_A | | | | | | | | |
| F_A | with airgap $c = 1,0$ mm | kN | 17,9 | 20,7 | 23,9 | 27,6 | 41,0 | 47,3 |
| F_A | with airgap $c = 1,25$ mm | kN | 17,7 | 19,9 | 23,1 | 26,1 | 39,1 | 46,0 |
| F_A | with airgap $c = 1,5$ mm | kN | 17,6 | 19,0 | 22,4 | 24,6 | 37,0 | 44,4 |
| Torque Calculation | | | | | | | | |
| M_{Br} | braking torque | Nm | 2 x F_A x μ x (d/2-42,5) | | | | | |
| Hydraulic | | | | | | | | |
| PL | release pressure | bar | 45 | 55 | 65 | 80 | 120 | 135 |
| P_{max} | max. pressure | bar | 85 | 85 | 110 | 110 | 150 | 175 |
| V_{max} | volume at $c = 1,5$ mm | ltr | 0,024 | | | | | |
| Brake Discs | | | | | | | | |
| b | disc thickness | mm | 20 ≤ b ≤ 40 | | | | | |
| d | disc-Ø | mm | 400 ≤ d ≤ 2000 | | | | | |
| d_1 | max. hub or drum-Ø | mm | d-230 mm | | | | | |
| Dimensions | | | | | | | | |
| L x B x H = 225 x (349+b) x 354 mm | | | | | | | | |
| max. weight: 85 kgs | | | | | | | | |

| Mounting Studs | | | |
|----------------|-----------------------|-----------|---------------------|
| n | quantity | 4 | |
| | size, grade | M20, 12.9 | |
| M_A | fastening torque | Nm | 690 at $\mu = 0,14$ |
| Linings | | | |
| | material | sinter | |
| | friction coefficient* | 0,4 | |

*average friction coefficient with standard material combination and a circumferential speed up to 15 m/s

When ordering please advise: right hand version, as shown; left hand version, mirror inverted!