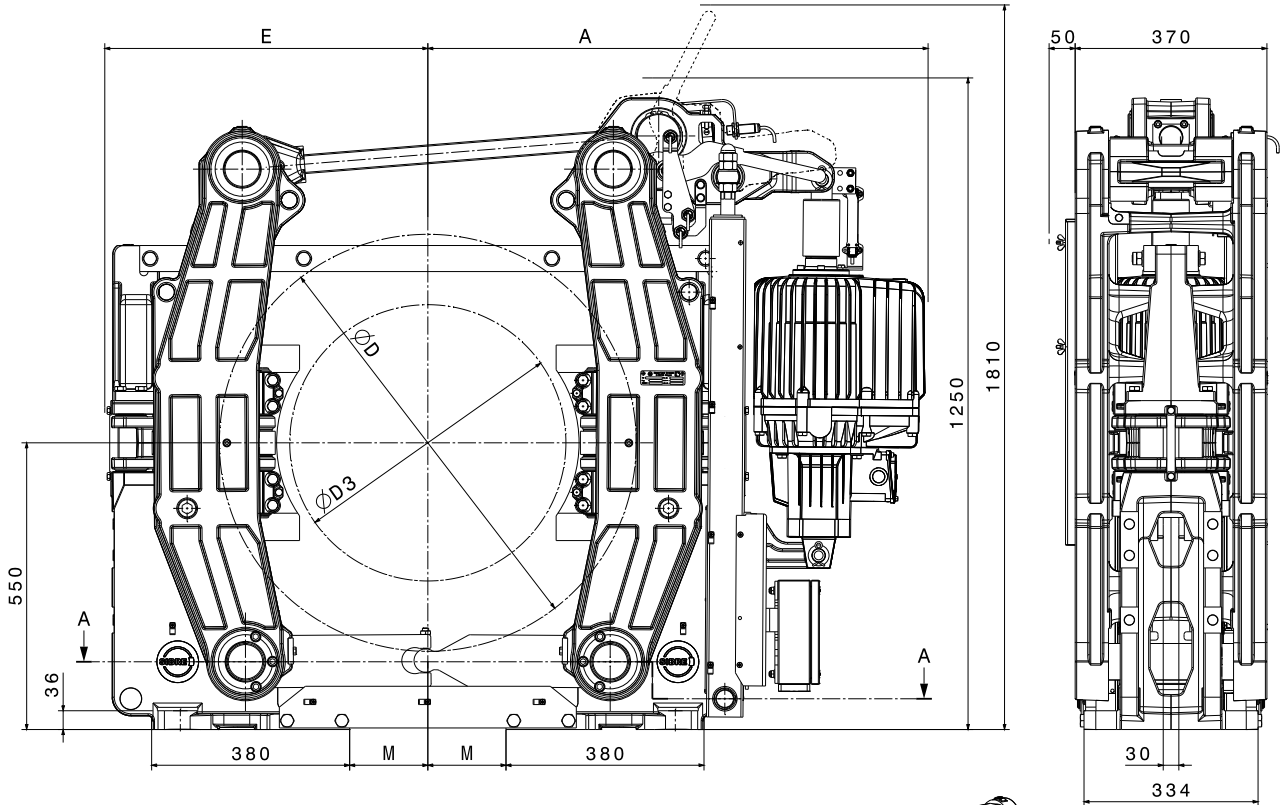




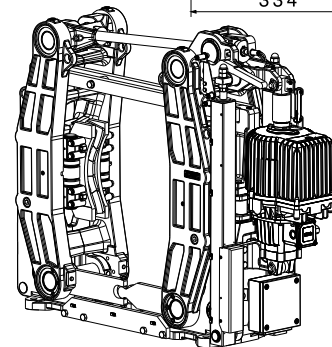
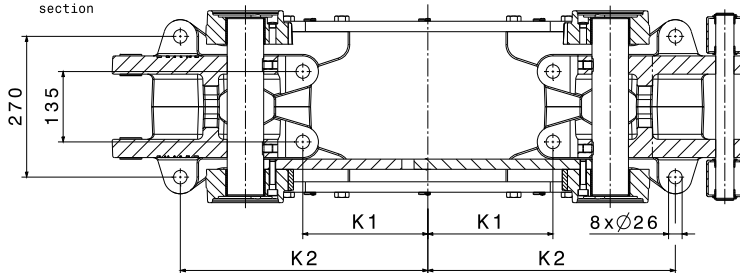
TWIN-CALIPER DISC BRAKE

TEXU G 800 - 1000

M 1501 469 E-EN-2019-08



Schnitt A-A
section



brake type	torque range $\mu=0,4*1$ [Nm]	$\varnothing D$	$\varnothing D_3$ max	E	A	M	K_1	K_2	kg* ²
TEXU 800 Ed630/10	10000 - 27000	800	530	620	960	150	240	475	880
TEXU 900 Ed630/10	11000 - 30000	900	630	670	1010	200	290	525	890
TEXU 1000 Ed630/10	12000 - 33000	1000	630	720	1060	250	340	575	900

STANDARD

- pins and rods stainless
- pivot points with DU-bushings
- sinter-linings
- split base plate for easy assembly

OPTIONS

- proximity switches „open“, „closed“, „padwear-limit“, „man. release applied“
- analogue sensors „reserve stroke“, „scale value“
- manual release
- temperature sensors PT100 for brake lining temperature
- terminal-box

*1 = the coefficient of friction μ can be subject to variation caused by several operating factors such as sliding speed, surface pressure, thermal load, disc surface etc. The indicated torques are to be considered for circumferential speeds of up to 65 m/sec and short peak temperatures of up to 650°C. Please contact us for details.

*2 = weight without thruster