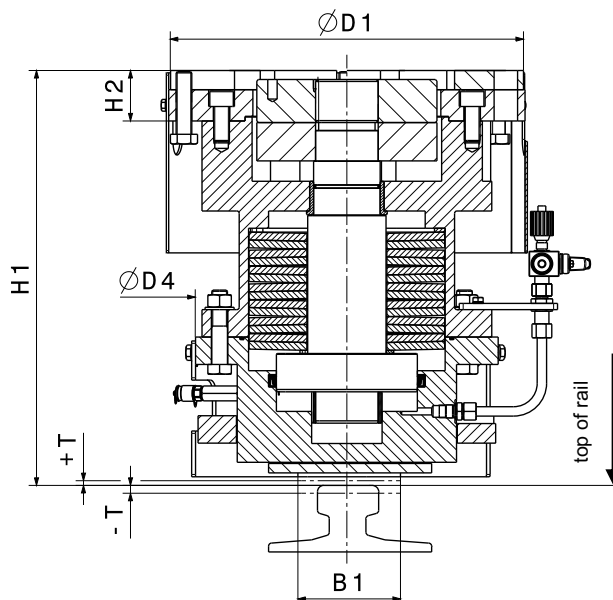
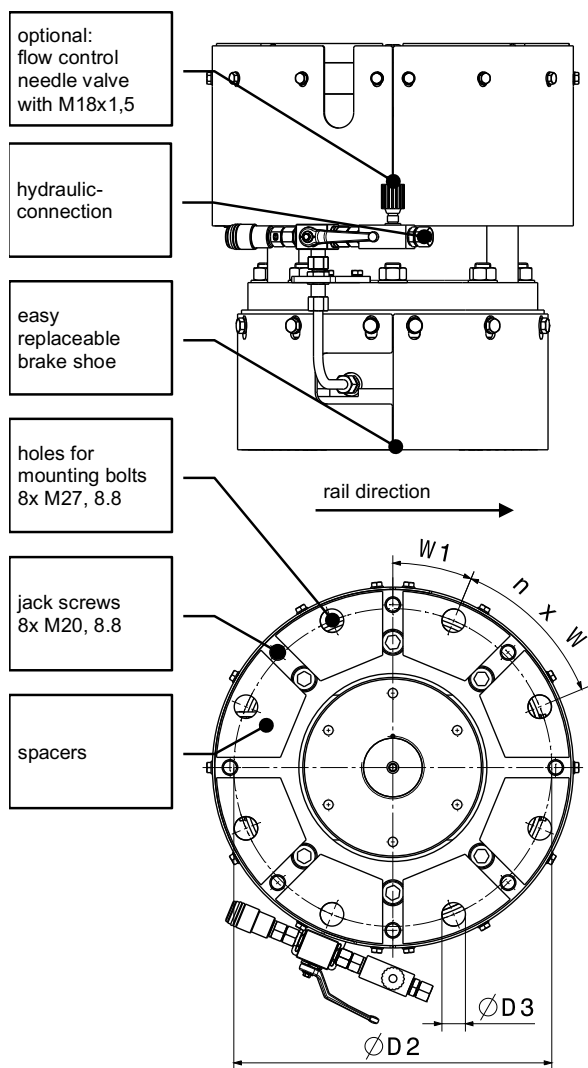




# HYDRAULIC RAIL PUSHER

## RPS 200 & 300

M 1501 335 E-EN-2017-10



### HYDRAULIC DATA:

medium: HLP-hydraulic oil DIN 51524-T2  
HLP Synth 32 standard

temperature range: [ -15°C.....+40°C ]

we recommend: SIBRE-hydraulic power packs  
V3.B \*) for RPS 200  
V3.C \*) for RPS 300  
with electronic control box acc.  
data sheet M 1501 264 E

\*) max. 4 brakes per power pack  
dimensional drawings upon request

Type	H1 mm	H2 mm	B1 mm	+T mm	-T mm	D1 mm	D2 mm	D3 mm	D4 mm	W1	n x W
RPS 200	530	64,5	125	+9	-9	455	406	30	397	22,5°	8 x 45°
RPS 300	630	64,5	125	+9	-9	455	406	30	397	22,5°	8 x 45°
Type	Holding force	Holding force at max. rail tolerance		Release pressure	max. operating pressure	Hydraulic- connection	Weight				
		+T	-T								
RPS 200	100 kN	120 kN	75 kN	110 bar	150 bar	3/8"	395 kg				
RPS 300	160 kN	180 kN	135 kN	160 bar	205 bar	3/8"	440 kg				