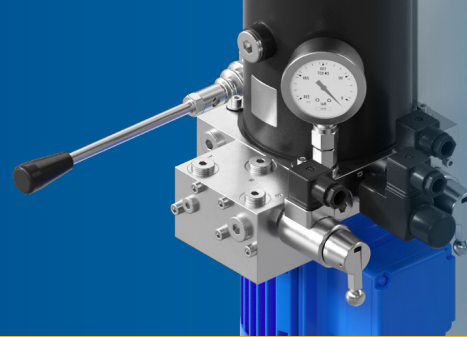


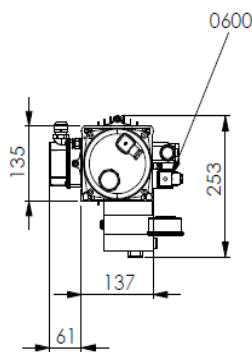
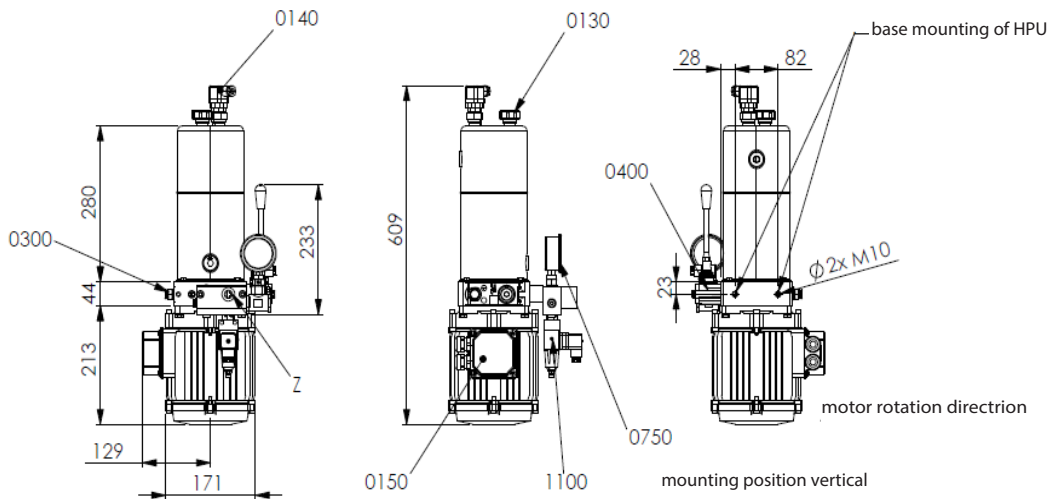
HYDRAULIC POWER UNIT

V2

M 1501 484 E



Dimensions only valid for standard version, please contact us for special versions and options!



Legend

0130	filler and breather screw
0140	electr. oil level gauge
0150	electro motor
0200	pump
0220	suction filter
0300	pressure relieve valve
0400	hand pump
0600	2/2 way directional seat valve
0750	pressure gauge
1100	pressure switch
Z	pressure port to brake G3/8"

TECHNICAL DATA

- weight without oil-filling
- tank volume
- ambient temperature ranges
- humidity
- recommended operating fluid
- protection class
- max. no. of operating cycles per hour
- motor
- supply voltage range
- valve voltages
- valve capacity per valve
- mounting position of HPU

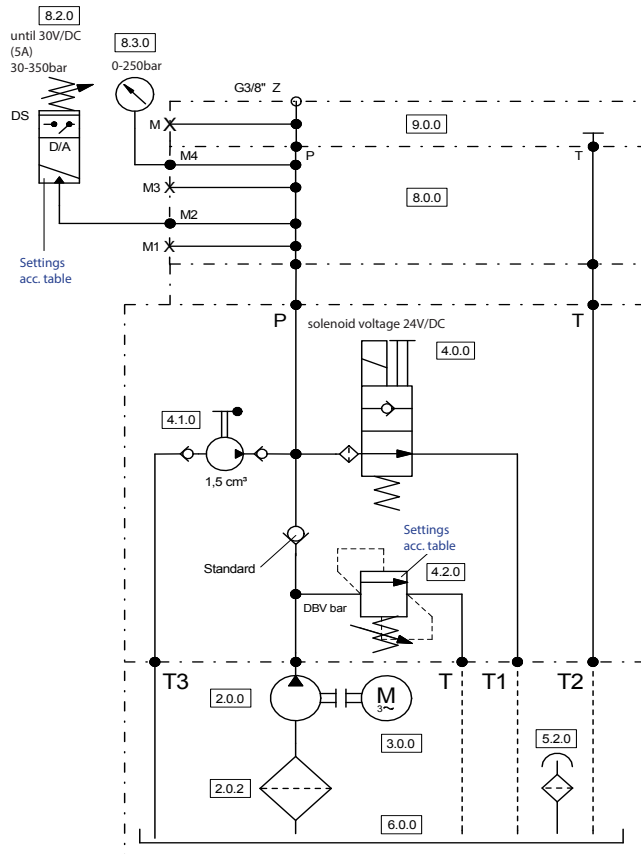
approx. 15 kg
 3 ltr. || usable 2,3 ltr.
 -15°C ... +40°C in standard version
 optional expandable
 ≤ 90%
 HLP Hydraulic oil acc DIN51524-T2
 - for standard version: HLP Synth 32
 - others version: upon request
 IP54 || IP65 upon request
 50
 AC motor; BG 90; 4 pole, 3-ph, 1450 U/min
 ISO-cl. F, S3 = 30 %
 50 Hz / 380-420 V
 60 Hz / 440-480 V
 P = 24 V DC (Standard)
 V = 115 V AC ; 50/60 Hz (optional)
 W = 230 V AC ; 50/60 Hz (optional)
 (others upon request)
 40 l/min at Δp 10 bar
 vertical || horizontal upon request



HYDRAULIC POWER UNIT V2

M 1501 484 E

TYPE	PRESSURE SWITCH		PRESSURE RELIEVE valve setting (DBV)	RELEASE PRESSURE	PUMP CAPACITY	MOTOR POWER kW	
	min	max				S1	S3 (30%)
	bar		bar	bar	l/min		
V2.1-E	55	70	85	55	5,8	1,5	2,2
V2.1-A	80	95	110	80	5,8	1,5	2,2
V2.1-B	120	135	150	120	5,8	1,5	2,2
V2.1-D	145	160	175	145	5,8	1,5	2,2
V2.1-C	175	190	205	175	5,8	1,5	2,2



- Legend
- 5.2.0 filler and breather screw
 - 3.0.0 electro motor
 - 2.0.0 pump
 - 2.0.2 suction filter
 - 4.2.0 pressure relieve valve
 - 4.1.0 hand pump
 - 4.0.0 2/2 way directional seat valve
 - 8.3.0 pressure gauge
 - 8.2.0 pressure switch
 - Z pressure port to brake G3/8"

TYPE	SUITABLE FOR				
V2.1-E	SHI 102	SHI 101	SHI 75-2	SHI 75-1	
V2.1-A	SHI 104	SHI 103	SHI 75-4	SHI 75-3	
V2.1-B	SHI 251	SHI 201	SHI 161	SHI 105	SHI 75-5
V2.1-D	SHI 281	SHI 252	SHI 231	SHI 106	SHI 75-6
V2.1-C	SHI 282	SHI 232	SHI 202	SHI 162	SHI 107
	CB8-H				